

14th PRIVATE FRENCH FLY-IN OF BUILDERS AND PILOTS OF « VAN'S »

1st announcement

The 14th private fly-in of VANS AIRPLANES builders and pilots
Organised by the VAN'S CLUB DE France

June 15,16 and 16, 2018
At La Baule-Escoubac (LFRE) aerodrome.



This year's fly in will take place in the "Pays de la Loire". June is statistically the driest month in the area... Therefore, we hope to welcome you in sunny weather, just like last year in Roanne.

ATTERRISSAGE A VUE
Visual landing

Ouvert à la CAP
Public air traffic
26 MAY 16

LA BAULE ESCOUBLAC
AD 2 LFRE ATT 01

				ALT AD : 106 (4 hPa) LAT : 47 17 18 N LONG : 002 20 49 W	LFRE VAR : 1° W (15)
---	---	---	---	---	--------------------------------

APP : NIL
TWR : NIL
AFIS : 121.4.
Absence AFIS : A/A (121.4) FR seulement/only.

14th PRIVATE FRENCH FLY-IN OF BUILDERS AND PILOTS OF « VAN'S »

Our friend and VCF member Francis Brakl will take care of us during the fly-in. Francis is a serial builder: he is currently building an RV-14, and he has previously done an RV-7 and an RV-8.

The nearby sea offers nice possibilities of swimming and hiking along the coast, while the city of Guerande and its famous salt will guarantee a great culinary destination.

PRE-REGISTRATION: It is required to pre-register to attend the VCF fly-in. A registration form is available for download on our website <http://vansclubdefrance.fr/le-blog.html>. Please complete the form and send it back by email to webmaster@vansclubdefrance.fr **before May 15, 2018** with your preferences regarding which meals you would like to have.

A deposit of 25€ is required for anyone wishing to have meals.

A special PayPal account has been set up specially for the occasion. Send your 25€ (per person) deposit to vansclubdefrance@orange.fr using PayPal.

This deposit will be refunded (less any PayPal fees) **only for cancellation made before June 13, 2018**. No refund will be made for cancellations after June 13, or for any other reason. This is to cover the non-refundable cost of advance payment by the VCF to restaurants that will provide meal services during the fly-in.

Arrivals and Departures: it will be possible to arrive as soon as Friday morning and depart at any time. We do not anticipate any restrictions. Of course you will have to verify all NOTAMS. Located in G airspace, it is however necessary to go through Nantes airspace to get there unless arriving from the West.

Radio can be done in either French or English while the AFIS is manned. If not manned auto-info (self reporting) it must be done in French.

Pay attention to the following:

- La Baule is home to various air activities: airplanes, ultralight, parachute. Plan to contact the AFIS at least 5 minutes prior arrival and avoid overflying the field during parachute activity.
- La baule is a busy tourist destination and the airfield can be busy in June.

Organisers decline all responsibility for any fault/omission following the rules of the air.

Customs: La Baule airport is not a Port of Entry, so if arriving from outside a Schengen member state it is necessary to transit via a port of entry to clear customs and immigration.

Runways: one hard surface runway 11/29, 960 x 25 Meters

Refueling: 100LL (Avgas) available at refuelling station managed by the airport operator. Payment by cheque, cash or credit card to the aerodrome personnel during AFIS hours: 9h-12H and 14h-19h local time.

Airplane apron: The tarmac is vast and we are not anticipating any parking problems. RV types will be parked on the main hard surface apron. Please take chocks and tie-downs along with you, there are tie-down areas.

PLEASE NOTE: a team of marshallers will guide you upon arrival, but it is each pilot's responsibility to properly park and secure his/her airplane. **Wearing high visibility jacket is highly recommended on the parking area.**

Parking (cars): a large car park with around 100 places is available for anyone arriving by road.

Check-in: After arriving, you are required to register with the organisers to retrieve you badges and meals tickets. Payment of meals is possible in Euro (€) or French Cheque only. There is no ATM on the airfield. Luggage can be stored in a room near the restaurant while awaiting transfer to your hotel. Pilots wishing to present their airplane (RV only) to the jury should state so during check-in.

Landing and Parking fee: We expect no landing or parking fee, this should be offered by the aerodrome operator.

Participating fee: 10€ will be charged per airplane to partly cover the important cost of the fly-in.

Wi-fi: free access inside the terminal

14th PRIVATE FRENCH FLY-IN OF BUILDERS AND PILOTS OF « VAN'S »

Metar/TAF/Notam: via wi-fi inside the terminal. This will also be placared on Sunday morning by the organisers.

MEALS: a catering service will be provided during the fly-in, either in the restaurant “Le Jazz Volant” (Friday lunch and dinner, and Sunday lunch), or under the fly-in tent (Saturday lunch and Gala dinner).

Dinner, 18€	Friday evening at “Le Jazz Volant” restaurant on the aerodrome
Lunch buffet, 25€	Saturday noon (buffet of starters, hot meals, cheese, desserts)
Gala Dinner, 50€	Saturday evening at 8:30 PM
Lunch, 15€	Sunday noon at “Le Jazz Volant” restaurant on the aerodrome.
OR take away, 10€	Sunday from 10:30 AM

These prices are estimations at this stage; we will publish final prices with our second announcement.

For security reasons wine will be sold separately, by bottle, (except for the Gala dinner on Saturday evening)

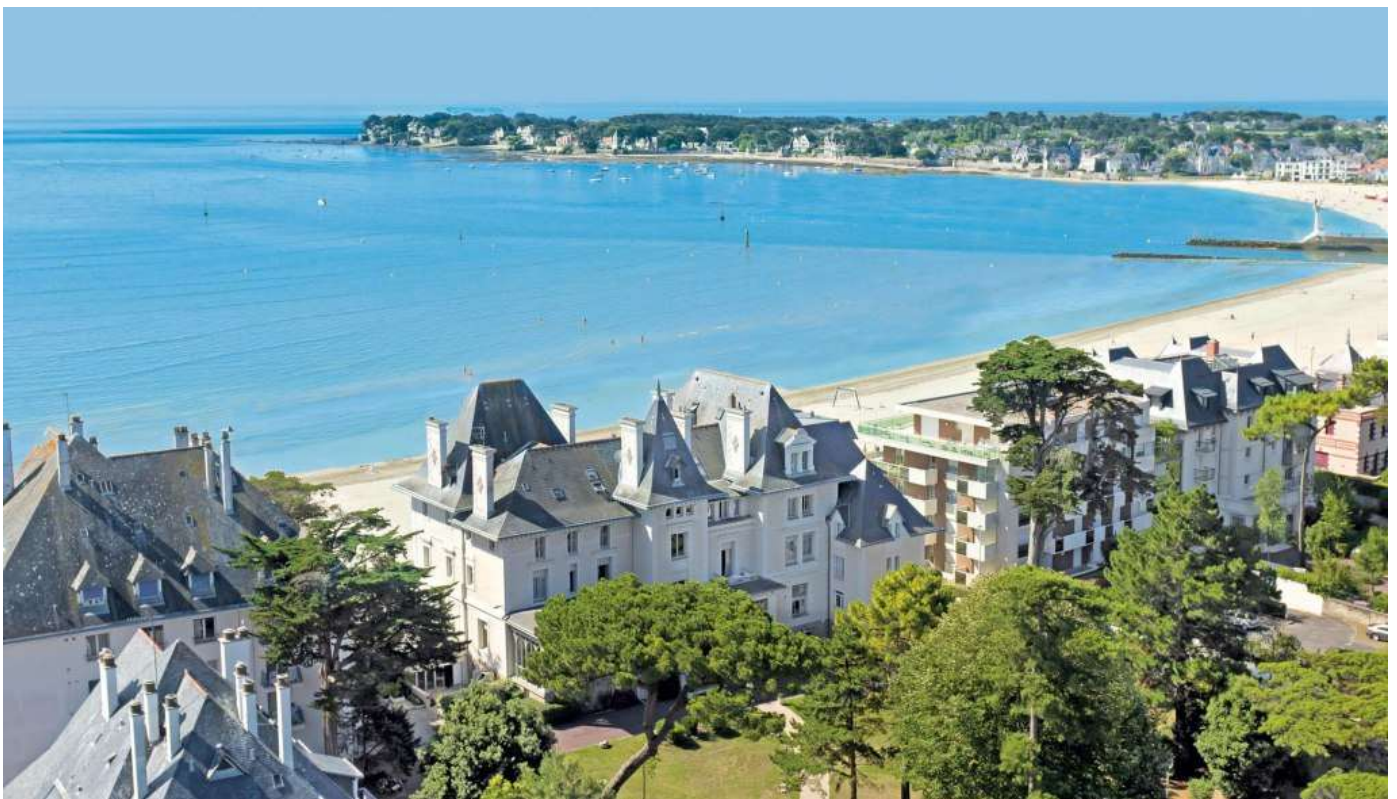
For the duration of the fly-in an « open bar » with light drinks, beer (with moderation), tea and coffee will be available to all participants wearing a badge (free tickets)

Accommodation: There are numerous hotels in town or near the aerodrome. Please refer the attached list of hotels.

Camping: Not possible on the aerodrome premises.

Transport from/to the aerodrome: A shuttle service will be provided by the VCF, mainly to designated hotels*. Participants coming by car are kindly asked to assist with transportation if possible, as is customary in the spirit of the VCF fly-in. Shuttle service to hotels after the Gala dinner will be provided.

Tourism: This is a very touristic area with too much to list here. You can find endless information online for what to do and to see.



WE EXPECT A LARGE NUMBER OF PARTICIPANTS FROM FRANCE AND OTHER PARTS OF EUROPE

14th PRIVATE FRENCH FLY-IN OF BUILDERS AND PILOTS OF « VAN'S »

ACCOMODATION / HOTELS

You will find below a list of hotels of different categories so you can choose according to your needs/budget.
WARNING: La Baule is very touristic region with high demand for hotels, so don't delay your booking as availabilities can become scarce quite rapidly.

VCF SHUTTLE service will be provided to the 4 hotels in this list.

The first 2 hotels have preferred rates for the fly-in. Mention the VCF during your booking for these rates.

Golden Tulip la Baule suites

10 avenue de la lieutenante

44500 La Baule

(+33)2 72 25 21 21

E-mail : reservation@goldentuliplabaule.com

Ouverture Avril 2017

4 étoiles - Wifi gratuit –

Piscine.

Parking privé fermé gratuit.

Pour 1 nuit :

Chambre 1 pers : 109€ petit déjeuner inclus

Chambre 2 pers : 119€ petits déjeuners inclus

Pour 2 nuits :

Chambre 1 pers : 198€ petit déjeuner inclus

Chambre 2 pers : 218€ petits déjeuners inclus

Préciser conditions Van's club de France à la résa.

Réservations modifiables ou annulables gratuitement

48 heures avant l'arrivée 18h00.

NAVETTE MINIBUS VCF

Hotel Ibis Saint Nazaire - Trignac

5 rue de la fontaine Au Brun

44570 Trignac

(+33)2 40 90 39 39

E-mail : H0858@accor.com

3 étoiles - Wifi gratuit –

Piscine. Climatisation

Parking privé fermé gratuit.

Pour 1 nuit :

Chambre 1 ou 2 pers : 50€

Petits déjeuners 10,50€/pers en sus

Préciser conditions Van's club de France à la résa.

Pour ce tarif, réservations modifiables ou annulables
gratuitement 48 heures avant l'arrivée 18h00.

Pour une annulation le jour J 18h maxi, la
chambre est à 59€

NAVETTE MINIBUS VCF

14th PRIVATE FRENCH FLY-IN OF BUILDERS AND PILOTS OF « VAN'S »

Hotel le Christina

26 Bd Hennecart
44500 La Baule
(+33)2 40 60 22 44
E-mail : Christina@hotel-le-christina.com

3 étoiles
Face à la Plage - Wifi Gratuit -
Parking gratuit
Chambre 1,2 personnes : 80 à 110 € suivant
chambre
Petit déj. en sus :13 €/pers

**Réservations modifiables ou annulables gratuitement
48 heures avant l'arrivée.**

NAVETTE MINIBUS VCF

Citotel Normandy

120 avenue de Mazy
44380 Pornichet
(+33)2 40 61 03 08
E-mail : info@normandyhotel.fr

2 étoiles – Wifi gratuit –
Chambre 1 personne : environ 80€ petit déjeuner
inclus
Chambre 2 personnes : environ 99€ petit déjeuner
inclus

**Réservations modifiables ou annulables gratuitement
48 heures avant l'arrivée**

NAVETTE MINIBUS VCF

OUR WEBSITE:

<http://www.vansclubdefrance.fr/>



OUR FACEBOOK PAGE:

<https://www.facebook.com/groups/vansclubdefrance/>



14th PRIVATE FRENCH FLY-IN OF BUILDERS AND PILOTS OF « VAN'S »

NOT FOR FLYING
Check latest updates before take-off.

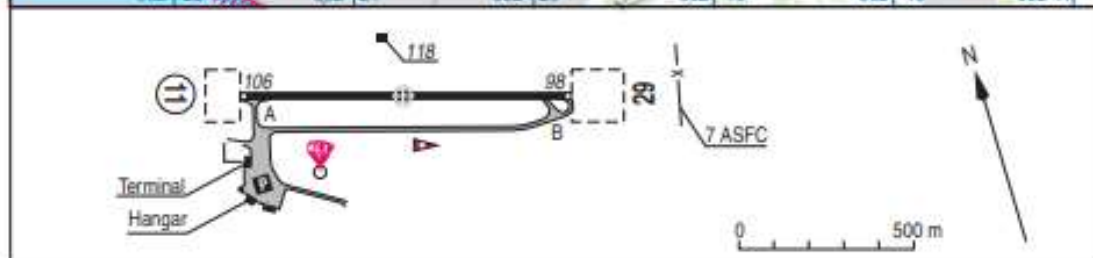
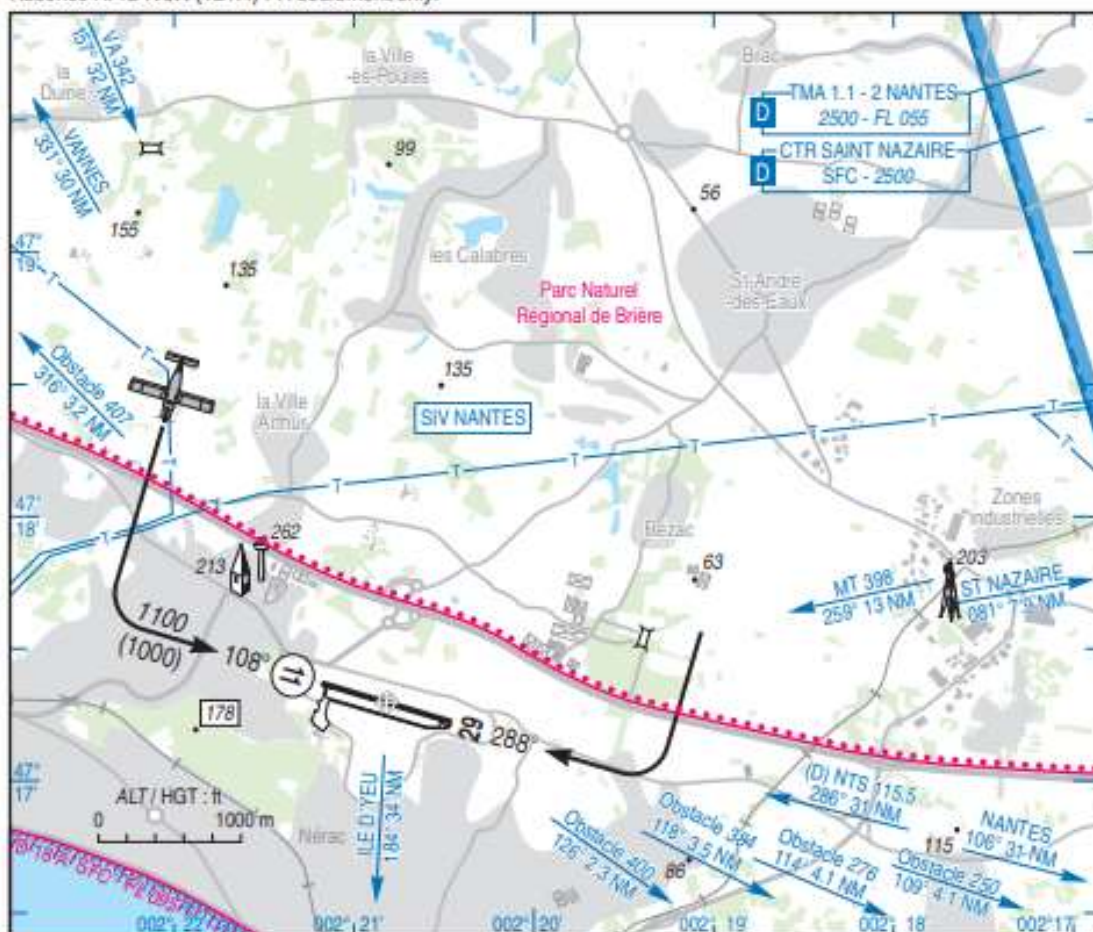
ATTERRISSAGE A VUE
Visual landing

Ouvert à la CAP
Public air traffic
26 MAY 16

LA BAULE ESCOUBLAC
AD 2 LFRE ATT 01

	ALT AD : 106 (4 hPa) LAT : 47 17 18 N LONG : 002 20 49 W	LFRE VAR : 1° W (15)
---	---	--------------------------------

APP : NIL
 TWR : NIL
 AFIS : 121.4.
 Absence AFIS : A/A (121.4) FR seulement/only.



RWY	QFU	Dimensions Dimension	Nature Surface	Résistance Strength	TODA	ASDA	LDA
11	108	950 x 25	Revêtu Paved	2.5 TRSI	1100	950	950
29	288				1050	950	950

Aides lumineuses : NIL

Lighting aids : NIL



AMDT 07/16 CHG : NIL

© SIA