

13th PRIVATE FRENCH FLY-IN OF BUILDERS AND PILOTS OF « VAN'S »

1st announcement

The 13th private fly-in of VANS AIRPLANES builders and pilots
Organised by the VAN'S CLUB DE France

June 16,17 and 18, 2017
At ROANNE (LFLO) aerodrome.

<http://www.vansclubdefrance.fr/>
<https://www.facebook.com/groups/vansclubdefrance/>

Almost at the centre of the hexagon. After Bordeaux, Colmar, La Baule, Nuits Saint Georges, St. Brieuc, Mende, Moulins, Nuits Saint Georges, Vannes, Amboise Sarlat-Domme and Niort-Marais-poitevin, Roanne offers a friendly airport and a nice gastronomic destination.

ATTERRISSAGE A VUE
Visual landing

Ouvert à la CAP
Public air traffic
26 MAY 2016

ROANNE
AD 2 LFLO ATT 01

						ALT AD : 1106 (40 hPa)	LFLO VAR : 1°E (15)
	CABLE					LAT : 46 03 10 N	
						LONG : 003 59 59 E	

APP : SAINT YAN Approche/Approach 123.4 - 119.5 (s) (au-dessus de / above 2000 ASFC)
TWR : NIL
AFIS : 120.9 (FR seulement/only, voir/see TXT 01)

We will be taken care of by the local RSA Club who owns a hangar on the aerodrome. Our friend and member of the VCF Committee, Jean Margotton, owns an RV-8 there. The Loire river and the old city of Roanne offers great opportunities for tourism.

PRE-REGISTRATION: It is required to pre-register to attend the VCF fly-in. A registration form is available for download on our website <http://vansclubdefrance.fr/le-blog.html>. Please complete the form and send it back by email to webmaster@vansclubdefrance.fr before **May 15, 2017** with your preferences regarding which meals you would like to have.

A deposit of 25€ is required for anyone wishing to have meals.

A special PayPal account has been set up specially for the occasion. Send your 25€ (per person) deposit to vansclubdefrance@orange.fr using PayPal.

This deposit will be refunded (less any PayPal fees) **only for cancellation made before June 13, 2017**. No refund will be made for cancellations after June 13, or for any other reason. This is to cover the non-refundable cost of advance payment by the VCF to restaurants that will provide meal services during the fly-in.

Arrivals/Departures: it will be possible to arrive as soon as Friday morning and depart at any time. We do not anticipate any restrictions. Of course you will have to verify all NOTAMS. Take note that Roanne airport is located inside the TMA of St-YAN (airspace E above 2000 Ft) and inside the SIV of Clermont-Ferrand.

Arrivals/departures as per normal airport procedures, air to air communications in French. Please refer to the VFR charts at the end.

Take special note of the following :

- Roanne airport hosts a lot of different activities (airplanes, gliders, parachuting, hot air balloons, ...) so plan to contact the AFIS by VHF at least 5 to 10 minutes before your arrival.

The organisers decline any responsibility in case of non-respect of the rules of the air.

13th PRIVATE FRENCH FLY-IN OF BUILDERS AND PILOTS OF

« VAN'S »

Customs: Roanne airport is NOT an airport of entry, therefore all crew arriving from outside the Schengen Area must clear customs at an approved airport of entry before proceeding to the fly-in.

Runways: One asphalt 1460m x 30m runway oriented 02/20, and one 740m x 100m parallel grass runway gives a choice of hard or soft surface according to your aircraft type and your preference.

Refuelling: 100LL (avgas) available on the airport from the airport authorities. Payment by cash in Euro or credit card during AFIS operating hours.

Airplane Parking: The parking area is vast and should not limit the number of airplanes. RV type airplanes will be parked on the grass parking in front of the RSA Club. Plan to carry your own chocks and tie-downs.

Non RV types will be parked in front of the control tower.

Each pilot will be responsible for parking and securing his/her airplane for the duration of the stay. A marshalling team will be attending and guiding all arrivals. **Wearing a yellow security jacket is highly recommended for all pilots on foot in the reserved area.**

Car parking: for those arriving by car, there is a car park in front of the terminal building. If required additional parking space is available on the adjacent grass.

Check-in: After parking plane or car, pilots and passengers are required to check-in with the organisers and will receive their meal tickets and their badges.

Payment for the fly-in will be possible in cash in Euro or by French cheque labelled in Euro. Those coming from outside the Euro zone are advised to get Euro currency before arriving as there is no ATM on the airfield. Baggage's can be stored in a room belonging to the RSA Club while waiting transfer to hotels. Pilots wishing to present their RV airplane to the jury must let the organisers know during check-in.

Landing and Parking Fee: waived as these are offered by the Roanne aerodrome for the duration of the fly-in.

Participation fee: A 10€ participation fee will be asked per airplane/car to alleviate the important cost of the fly-in.

Wi-Fi: Free Wi-Fi will be available in the terminal.

Weather briefing: possible inside the terminal using internet. Weather briefings will be placarded on Sunday morning.

Meals: lunch service will be served inside the hangar of the aeroclub. For Friday lunch a shuttle bus service will take you to find a restaurant nearby. Gala dinner will take place on Saturday evening.

Dinner, approximately 15€	on Friday evening (platter)
Lunch buffet, approximately 22€	Saturday noon (buffet with hot selection)
Gala Dinner, 50€	Saturday evening around 8 :30 pm.
Take-away lunch bag 10€	for Sunday lunch (from 10:30 am)

These prices are estimations at this stage, we will publish final prices with our second announcement.

For security reasons wine will be sold separately, by bottle, (except for the Gala dinner on Saturday evening)

For the duration of the fly-in an « open bar » with light drinks, beer (with moderation), tea and coffee will be available to all participants wearing a badge inside the terminal building

Accommodation: There are numerous hotels in town or near the aerodrome. Please refer the attached list of hotels.

Camping: Not possible on the aerodrome premises.

Transport from/to the aerodrome: A shuttle service will be provided by the VCF, mainly to designated hotels*. Participants coming by car are kindly asked to assist with transportation if possible, as is customary in the spirit of the VCF fly-in. Shuttle service to hotels after the Gala dinner will be provided.

Tourism: See the links below to see what the region has to offer.

<http://leroannais.com>

www.france-voyage.com/tourism/roanne-1254.htm

<http://uk.france.fr/en/information/discovering-roanne>

13th PRIVATE FRENCH FLY-IN OF BUILDERS AND PILOTS OF

« VAN'S »

WE EXPECT A LARGE NUMBER OF PARTICIPANTS FROM FRANCE AND OTHER PARTS OF EUROPE

ACCOMODATION / HOTELS

You will find below a list of hotels of different categories so you can choose according to your needs/budget.

WARNING: Roanne is an active region with high demand for hotels, so don't delay booking a hotel as availabilities can become scarce quite rapidly.

VCF SHUTTLE service will be provided to the 4 first hotels in this list.

To benefit the negotiated preferred rate for the Ibis Hotel (1st on the list), send an email, or call, mentioning you're coming for the VFC fly-in, and likewise for late cancellations without penalty for the first four hotels on the list.

Hôtel Ibis

53 Bd Charles de Gaules
42120 Le Coteau
(+33)4 77 68 36 22
E-mail : h0708@accor.com

3 stars – Free Wi-Fi –
Swimming pool.
Free Outdoors Private Parking.
Room for 1 or 2 pers :
SPECIAL VCF fly-in price: 49€ instead of 59€
Breakfast: 9,90€/pers
Mention VCF Price at reservation to get the discount
and late cancellation without penalty.
Free Modification or cancellation until 6pm the day
before.

VCF SHUTTLE BUS

Campanile Roanne

38 Rue de Matel
42300 Roanne
(+33)4 77 72 72 73
E-mail : contact@campanile-roanne.com

3 stars – free Wi-Fi–
Free Private Parking.
Room for 1 or 2 person : 50€
Breakfast : 9€/pers

Mention VCF at reservation for late cancellation
without penalty.
Free Modification or cancellation until 6pm the day
before.

VCF SHUTTLE BUS

Ace Hotel Roanne-Mably

1 rue Edouard Branly
42300 Mably
(+33)4 77 69 26 92
E-mail : roanne@ace-hotel.com

Modern budget Hotel. – Free Wi-Fi – A.C.
Near the local commercial zone restaurants.
Free secured private parking

Mention VCF at reservation for late cancellation
without penalty.
Free Modification or cancellation until 6pm the day
before.

VCF SHUTTLE BUS

Ibis Styles Roanne centre gare.

46 cours de la République
42300 Roanne
(+33)4 77 71 79 69
E-mail : h8769@accor.com

3 stars – Free Wi-Fi –
Private parking – 10€/day.
Room 1 person : 59€ including breakfast
Room 2 persons : 69€ including breakfast
Mention VCF at reservation for late cancellation
without penalty.
Free Modification or cancellation until 6pm the day
before.

VCF SHUTTLE BUS

13th PRIVATE FRENCH FLY-IN OF BUILDERS AND PILOTS OF « VAN'S »

Château de Champlong

100 chemin de la Chapelle

42300 Villerest

(+33)4 77 69 69 69

E-mail : contact@chateau-de-champlong.com

4 stars – Free Wifi –

Free private parking

Rooms from 135€ to 220€

Breakfast : 20€/pers

WARNING: Roanne is an active city, do not delay booking your hotel room.

OUR WEBSITE:

<http://www.vansclubdefrance.fr/>



OUR FACEBOOK PAGE:

<https://www.facebook.com/groups/vansclubdefrance/>



13th PRIVATE FRENCH FLY-IN OF BUILDERS AND PILOTS OF « VAN'S »

VFR Approach chart and aerodrome info:
https://www.sia.aviation-civile.gouv.fr/dvd/eAIP_02_FEB_2017/Atlas-VAC/FR/VACProduitPartieframeset.htm

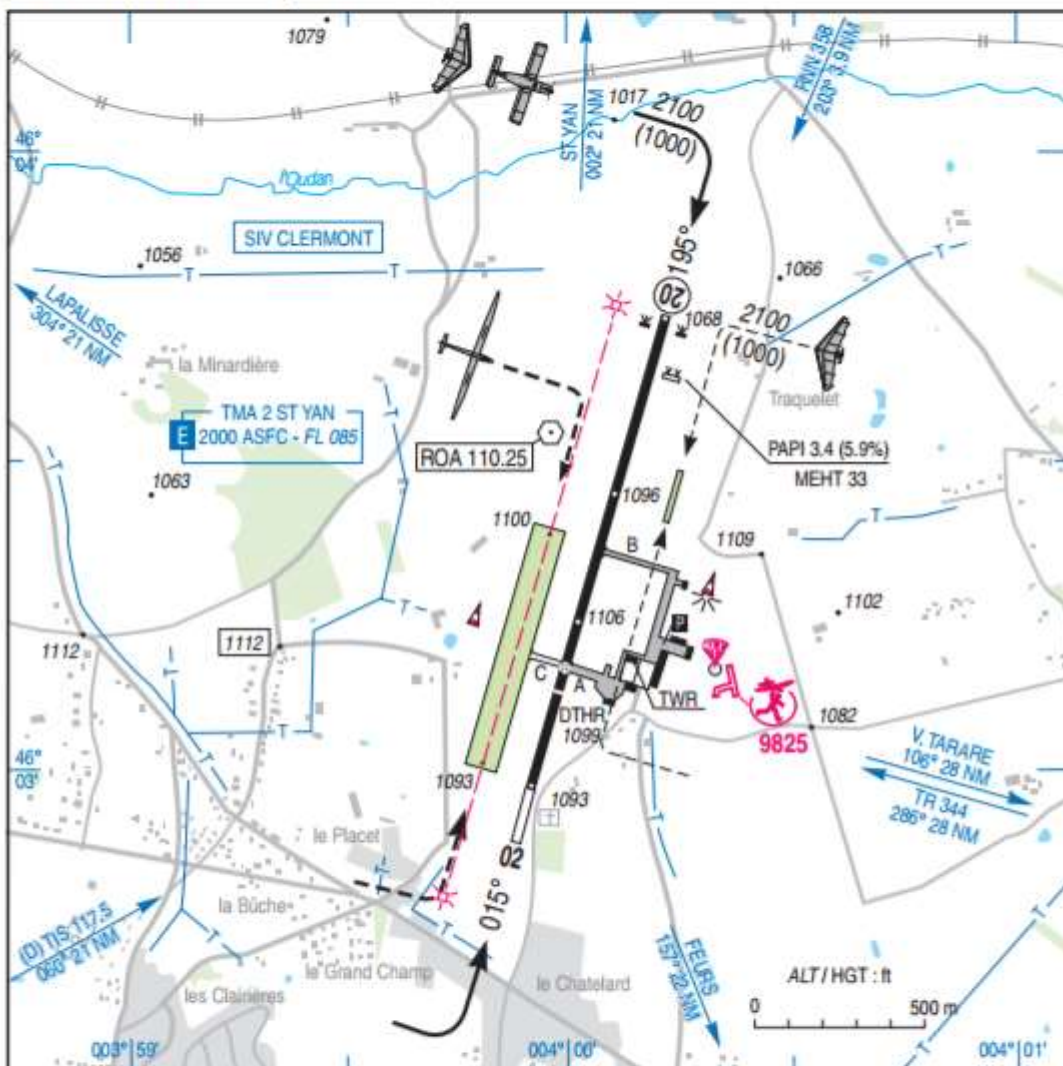
ATERRISSAGE A VUE
Visual landing

Ouvert à la CAP
 Public air traffic
 26 MAY 2016

ROANNE
 AD 2 LFLO ATT 01

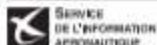
	ALT AD : 1106 (40 hPa) LAT : 46 03 10 N LONG : 003 59 59 E	LFLO VAR : 1°E (15)
--	--	-------------------------------

APP : SAINT YAN Approche/Approach 123.4 - 119.5 (s) (au-dessus de / above 2000 ASFC)
 TWR : NIL
 AFIS : 120.9 (FR seulement/only, voir/see TXT 01)



RWY	QFU	Dimensions Dimension	Nature Surface	Résistance Strength	TODA	ASDA	LDA
02	015	1460 x 30	Revêtue Paved	12 F/C/W/T	1460	1460	1160
20	195				1460	1620	1460
02	015	740 x 100	Non revêtue Unpaved	-	740	740	740
20	195				740	740	740

Aides lumineuses : RWY 02 / 20 : BI PCL (voir TXT 01)	Lighting aids : RWY 02 / 20 : LIL PCL (see TXT 01)
--	---



AMDT 07/16 CHG : Numéro activité AEM.

© SIA

13th PRIVATE FRENCH FLY-IN OF BUILDERS AND PILOTS OF « VAN'S »

AD 2 LFLO TXT 01
26 MAY 2016

AIP FRANCE

ROANNE

Consignes particulières / Special instructions

Conditions d'utilisation de l'AD

Activité IFR possible.
AD réservé aux ACFT munis de radio.
Bande gazonnée 02/20 réservée aux ACFT autorisés par l'exploitant AD et au VAV.

Procédures et consignes particulières

QFU 195° préférentiel cause procédure IFR.
Roulage interdit hors RWY et TWY.
TWY B réservé aux ACFT de CAT. A et de MTOW < 3500 kg.

VFR de nuit

Départ : monter verticale aérodrome à l'altitude minimale du tronçon à emprunter.
Arrivée : l'altitude du dernier segment utilisé sera maintenue jusqu'à être en vue et dans les 5 NM de l'aérodrome, puis rejoindre le circuit.
Itinéraires : les itinéraires ROANNE - Le Donjon et ROANNE - La Palisse ne sont pas utilisables en cas de non fonctionnement du VOR ROA.

Equipement AD

PCL PPR PN 24 HR AFIS.
PCL n'allume pas le PAPI.
PAPI RWY 20 : divergence axe de piste de 5° DROITE.

Activités particulières

AEM (N° 9825) : SFC - 500 ft ASFC.
SR-SS selon protocole.
Parachutage sur AD (N° 411) : FL 110 - VEN, SAM, DIM et JF : 0600-2300, (ETE : - 1 HR).
Activité réelle connue de :
SAINT YAN APP 123.4 (HOR ATS)
ROANNE INFO 120.9 (HOR ATS)
CLERMONT INFO 120.675 (FL < 085)
LYON INFO 135.2 (FL > 085).
Pendant les vols ULM et/ou aéromodèles, l'activité parachutisme est incompatible sans accord préalable et coordination entre les parties.
Activité de treuillage sur AD (N° 989), limitée à 3000 ft AMSL tous les jours, SR - SS, annoncée par feu tournant orange installé sur le treuil. Câble non balisé. Information des usagers sur ROANNE INFO.

← Eviter verticale en dessous de 3000 ft AMSL.

AD operating conditions

Possible IFR operations.
AD reserved to radio-equipped aircraft.
Grass strip 02/20 reserved for ACFT authorized by AD operator and for gliders.

Procedures and special instructions

Preferred QFU 195° due to IFR procedure.
Taxiing prohibited except on RWY and TWY.
TWY B reserved for CAT. A ACFT with MTOW < 3500 kg.

Night VFR

Departure: climb overhead airfield up to route segment minimum altitude.
Arrival: last en route segment altitude will be maintained until being in sight and within 5 NM of the airfield, then join traffic pattern.
Routes ROANNE-Le Donjon and ROANNE-La Palisse are not usable in case of ROA VOR malfunction.

AD equipment

PCL PPR PN 24 HR AFIS.
PAPI not turned on by PCL.
PAPI RWY 20: offset 5° RIGHT from RWY centreline.

Special activities

AEM (NR 9825): SFC - 500 ft ASFC.
SR-SS as per protocol.
Parachuting activity (NR 411) FL 110 - FRI, SAT, SUN and HOL : 0600-2300, (SUM: - 1 HR).
Activity known by:
SAINT YAN APP 123.4 (SKED ATS)
ROANNE INFO 120.9 (SKED ATS)
CLERMONT INFO 120.675 (FL < 085)
LYON INFO 135.2 (FL > 085).

During ULM and/or flying models activities, parachuting activity is incompatible without settlement and coordination between the factions.

Winch launching activity on AD (NR 989), limited to 3000 ft AMSL every day, SR - SS, announced by orange turning light on the winch. Non marked cable. Users information on ROANNE INFO.

Avoid overflying AD below 3000 ft AMSL.

13th PRIVATE FRENCH FLY-IN OF BUILDERS AND PILOTS OF « VAN'S »

AIP FRANCE

AD 2 LFLO TXT 02
26 MAY 2016

ROANNE

Informations diverses / Miscellaneous

Horaires sauf indication contraire / Timetables unless otherwise specified
UTC HIV ; HOR ETE : -1HR / UTC WIN ; SKED SUM : -1HR

- 1 - **Situation / Location** : 7 km WNW Roanne (42 - Loire).
- 2 - **ATS** : LUN-VEN / MON-FRI: 0800-1100, 1300-1700.
SAM, DIM, JF / SAT, SUN, HOL: 01 JUN - 30 SEP : 0900-1100, 1330-1700.
Possibilité d'ouverture pour les autres trafics sur PPR la veille (le VEN PN avant 1600 pour les week-end).
Opening is possible for other traffics on PPR the day before (on FRI PN before 1600 for week-end).
TEL : 04 77 66 83 55 - FAX : 04 77 66 85 99.
E-mail : aeroport@roannais-agglomeration.fr
Adresse : Aérodrome ROANNE 42155 St Léger sur Roanne.
- 3 - **VFR de nuit / Night VFR** : Agréé (Voir aides lumineuses) / *Approved (See lighting aids).*
- 4 - **Exploitant d'aérodrome / AD operator** : Roannais agglomération
63 rue Jean Jaurès, BP 5,
42311 Roanne CEDEX
TEL : 04 77 66 99 00 - FAX : 04 77 66 85 99,
E-mail : aeroport@roannais-agglomeration.fr
- 5 - **AVA** : DSAC Centre-Est (voir / see GEN).
- 6 - **BRIA** : LYON (voir / see GEN).
- 7 - **Préparation du vol / Flight preparation** : Acheminement PLN VFR / *Addressing VFR FPL* : voir / see GEN 12.
- 8 - **MET** : VFR: voir / see GEN VAC ; IFR: voir / see AIP GEN 3.5 ; Station: NIL.
- 9 - **Douanes / Customs** : NIL.
- 10 - **AVT** : Carburants / *Fuel* : 100 LL, Jet A1 HOR AFIS. Lubrifiants / *Lubricants* : NIL
Bons modèle 19, paiement comptant, cartes bancaires, chèques.
Model 19 vouchers, cash, credit cards, cheques.
- 11 - **SSLIA** : Niveau 2 / *Level 2* : LUN-VEN / MON-FRI : 0800-1100, 1300-1700.
En dehors de ces HOR niveau 1.
Niveau 2 disponible sur PPR le dernier jour ouvré avant 1600.
Outside these SKED level 1.
Level 2 on PPR the last opening day before 1600.
FAX : 04 77 66 85 99.
- 12 - **Péril animalier / Wildlife strike hazard** : NIL.
- 13 - **Hangars pour aéronefs de passage / Transient aircraft hangars** : O/R en fonction des disponibilités.
O/R according to availability.
- 14 - **Réparations / Repairs** : Roanne Aéro Maintenance.
Aéroport de Roanne - 42155 Saint-Léger sur Roanne.
TEL : 04 77 64 56 42 - 06 77 19 31 32.
E-mail : roanne.aero@gmail.com
- 15 - **ACB** : Club Aéronautique Roannais, TEL : 04 26 54 65 64.
Amicale des Pilotes Roannais, TEL : 07 82 06 13 71.
Centre de vol à voile Roannais, TEL : 04 77 66 81 08.
- 16 - **Transports** : Taxi O/R.